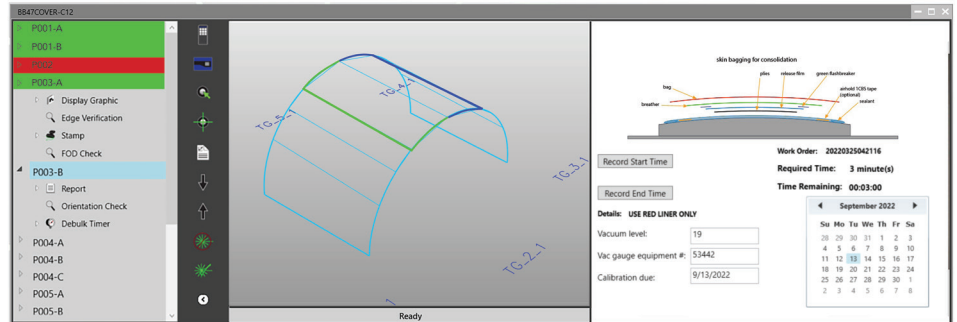


## EFFICIENT, MULTITASKING CONTROL READY FOR INDUSTRY 4.0

### PRODUCT DESCRIPTION

ALIGN 4.0 software controls the functionality of all Aligned Vision hardware, including LASERGUIDE, LASERVISION, and our industry-exclusive full-function remote control devices. ALIGN 4.0 is an open-platform system that helps accelerate operator value-added tasks and enables Industry 4.0 connectivity for laser projection and automatic inspection processes.



### FEATURES AND BENEFITS

#### Multitasking software

- Independently controls multiple jobs from one computer
- Provides functionality in a single seat of software that would require multiple seats and setups of other vendors' software
- Minimizes equipment and maintenance costs as well as cleanroom footprint
- Full support of Industry 4.0 data collection and delivery

#### CAD-like user interface

- Provides operators with a familiar user experience, including 3D CAD images and 3D ply viewer window
- Supports full control of each fabrication job both at the controller and on smart mobile devices
- Improves operator efficiency and accuracy

#### Advanced functionality and connectivity

- Orients display screen to match operator's view of the tool
- Automatically registers all projectors when the first is registered
- Runs projection, inspection, alignment, process control, kitting, AutoFocus and AutoAim functions
- Improves Industry 4.0 connectivity, including support of master csv, multiple file formats, full integration, and plug-and-play PLC interface



### SPECIFICATIONS

|                                |  |
|--------------------------------|--|
| Data Compatibility             | Fibersim, Catia, TruLASER, Verisurf, metrology data and CAD & NC data  |
| Controller                     | Industrial computer with monitor, keyboard, uninterruptible power supply, wireless access point, ethernet switch |
| Operating System               | Windows  |
| Programming                    | Import layup sequence; drag-and-drop non-layup steps   |
| User Interface                 | Foreign language support   |
| Support                        | 3 levels of operator privileges; event logging for statistical analysis  |
| Projectors supported           | 8 per system   |
| Simultaneous jobs supported    | 8  |
| Simultaneous active data files | 8  |
| Smart mobile devices supported | 8  |
| Warranty                       | 2 years  |
| Customer Support               | Unlimited free phone and email support for the life of the projector   |